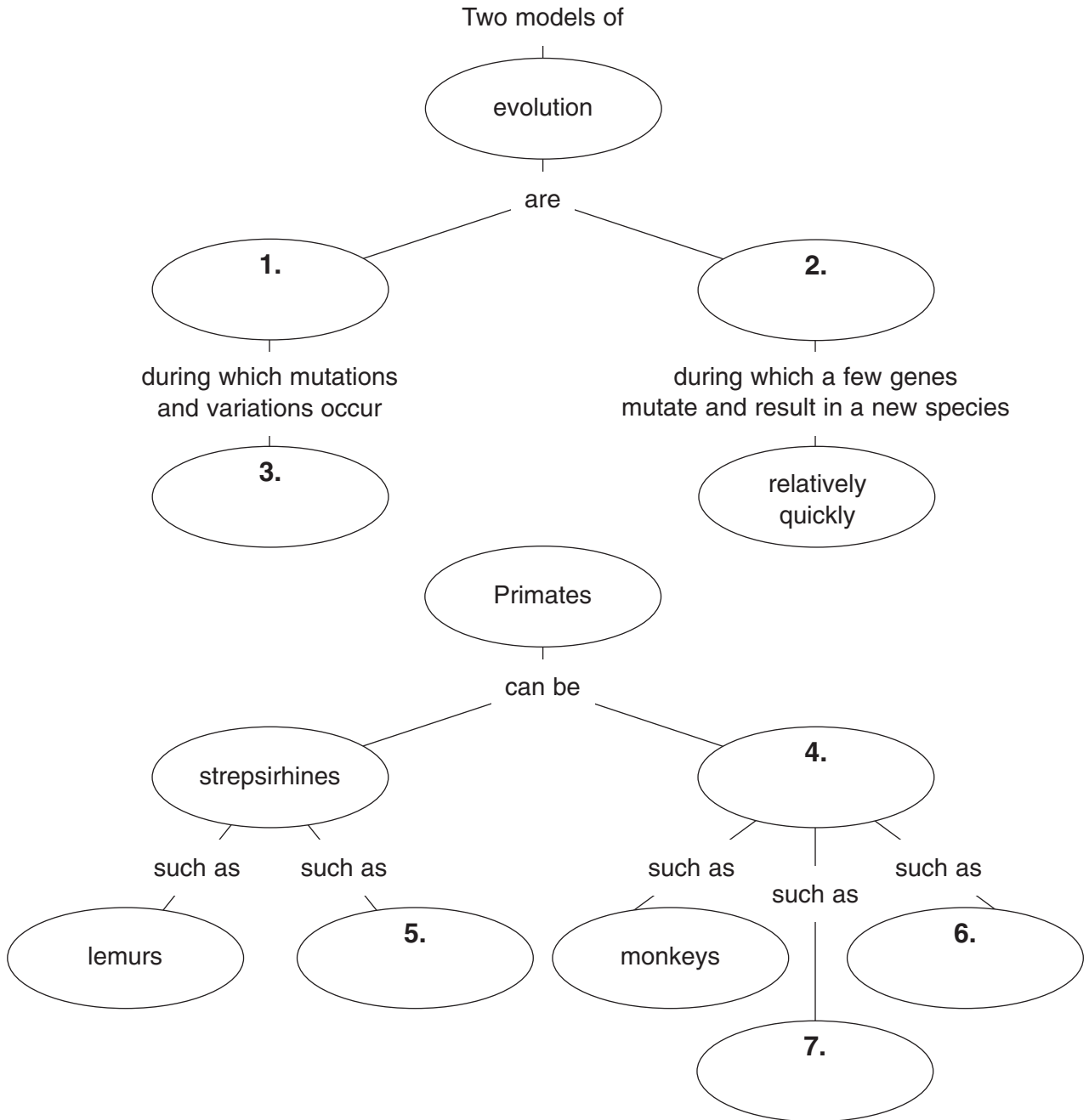


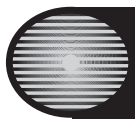
**Directed Reading for  
Content Mastery**

**Overview  
Adaptations Over Time**

**Directions:** Complete the concept maps using the terms in the list below.

- gradualism      tarsiers      slowly      apes  
haplorhines      punctuated equilibrium      humans



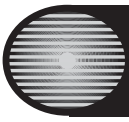


Directed Reading for  
Content Mastery

## Section 1 ■ Ideas About Evolution

**Directions:** Circle the term in parentheses that correctly completes the sentence.

1. (Lamarck/Darwin) hypothesized that characteristics developed by parents are passed on to their offspring.
2. A trip to the Galápagos Islands prompted (Lamarck/Darwin) to develop the theory of evolution by natural selection.
3. Variations result from (mutations/adaptations) in an organism's genes.
4. The rapid development of bacteria resistant to penicillin is an example of (gradualism/punctuated equilibrium).
5. Geographic isolation (does/does not) contribute to evolution.
6. Traits developed during a parent's lifetime (are/are not) passed on to offspring.
7. Darwin's theory of evolution by natural selection emphasizes the (similarities/differences) among individuals of a species.
8. A species is a group of organisms that share similar characteristics and (cannot/can) reproduce among themselves to produce fertile offspring.
9. Darwin observed that the beak-shapes of different species of Galápagos finches (were/were not) related to their eating habits.
10. (Populations/organisms) are made up of all the individuals of a species living in the same area.
11. Variations that occur among individuals of a species (are/are not) passed on to offspring.



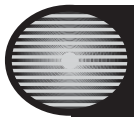
Directed Reading for  
Content Mastery

**Section 2** ■ Clues About Evolution  
**Section 3** ■ The Evolution of Primates

**Directions:** Write the term that matches each description below in the spaces provided. The vertical boxed letters should spell a word that is important in this study and complete item 10.

1												
2												
3												
4												
5												
6												
7												
8												
9												

1. humans, monkeys, and apes
2. Scientists estimate ages of rocks using \_\_\_\_\_ elements.
3. term meaning “wise human”
4. the study of the earliest growth stage of organisms
5. Body parts similar in origin and structure are \_\_\_\_\_ .
6. body structures that don’t seem to have a function
7. humanlike primates who lived about 4 to 6 million years ago
8. the remains, an imprint, or a trace of a prehistoric organism
9. type of rock in which most fossils are found
10. The important word is \_\_\_\_\_.



Directed Reading for  
Content Mastery

## Key Terms Adaptations Over Time

**Directions:** Circle the term in the puzzle that fits each clue. Then write the term on the line next to its clue. The terms read across or down.

H U G B E T I N I W R A N V E S T I G I A L N  
O N O T V Y S E E W H E R T M E P O C L U O N  
M A H M A T P W I N T S E C B O T L W G C R A  
O H O S R H R N S C I T V V R U M O V R E T T  
S O M K I E I C E L S O O U Y U L E K A C S I  
A H I P A J M L L L P N L H O D H T K D F W S  
P U N C T U A T E D E Q U I L I B R I U M O C  
I A I U I P T K C O C U T L O V B O R A M S S  
E T D S O S E S T C I U I C G U S I A L T Y H  
N T S H N O S A I Y E P O A Y I O S U I O C J  
S R Y E W S N N O S S O N N F F O N Y S C H E  
W E S E D I M E N T A R Y T D L E L E M E N T

- \_\_\_\_\_ 1. a group of organisms that share similar characteristics
- \_\_\_\_\_ 2. Change in inherited characteristics over time is \_\_\_\_.
- \_\_\_\_\_ 3. Darwin's theory of evolution by natural \_\_\_\_.
- \_\_\_\_\_ 4. the model for the slow, ongoing process of evolution
- \_\_\_\_\_ 5. the model for rapid evolution
- \_\_\_\_\_ 6. kind of rock in which fossils are often found
- \_\_\_\_\_ 7. Each radioactive \_\_\_\_ gives off radiation at a different rate.
- \_\_\_\_\_ 8. the study of embryos and their development
- \_\_\_\_\_ 9. \_\_\_\_ structures appear to have no purpose.
- \_\_\_\_\_ 10. animals with opposable thumbs and binocular vision
- \_\_\_\_\_ 11. humanlike primates of 4 to 6 million years ago
- \_\_\_\_\_ 12. early humans
- \_\_\_\_\_ 13. an inherited trait that makes an individual different