

# NOTES: Cladograms

## UNIT 3: Biological Evolution

CUE (Reorder)

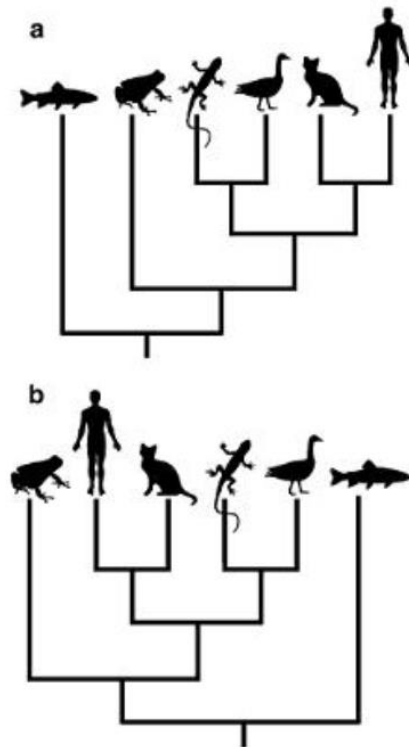
**Phylogeny:** \_\_\_\_\_

### Derived Characters

- Characteristics that \_\_\_\_\_ more \_\_\_\_\_ in a group but are not seen in \_\_\_\_\_ organisms.
- Derived characters are used to construct a \_\_\_\_\_

**Cladograms** are a diagrams that show \_\_\_\_\_

QUESTIONS  
(Reflecting)



SUMMARY(Review):



Additional information can be found in the following Workbook: The Diversity of Life

Pages 26-29