

Name: _____

Class: _____

Evidence of Evolution Notes

p. 177-179 Cells and Heredity

CUE (Reorder)

Evidence that supports evolution includes:

1) Fossils

The fossil record provides clues about how and when new species evolved and how organisms are _____.

2) Similarities in _____ Development

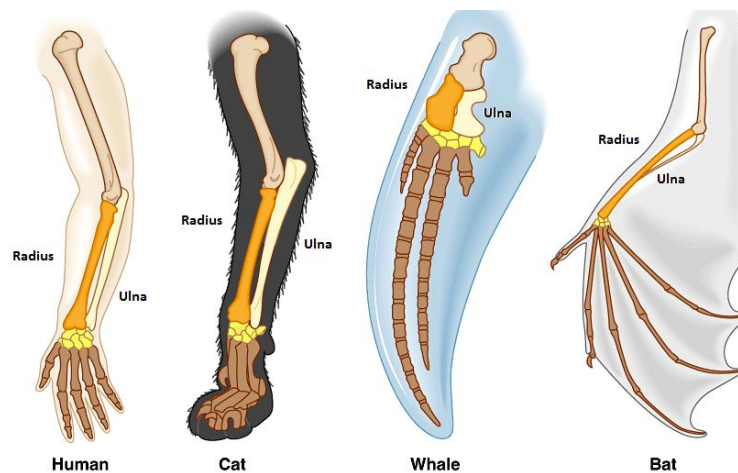
3) Similarities in _____

Similar structures that related species have inherited from a common ancestor are known as _____.

4) Similarities in _____ and _____ Structure

Similar body structures are due to common _____.

QUESTIONS
(Reflecting)



SUMMARY(Review):